

MEPPERSHALL CRAFT CLUB 2022

Contents

Editorial by Mick Ridley and James Read	2
Letters to the Editors	3
Meppershall Parish Council – Approved Minutes	4
Meppershall Children Plant A Woodlands Rest Showhome Garden	8
Meppershall Craft Club – 3 Years On!	10
David Foskett Retires From Meppershall Village Hall Committee	11
Enid Pamment’s Shefford Leisure Club Farewell Gathering.....	12
Meppershall Social Club.....	14
Sun, Skin & Suspicious Symptoms.....	14
End of Life Support – The Anne Robinson Helpline	15
Join Meppershall CERT WhatsApp Group	16
Trugs and Trowels Gardening Club Campton.....	17
Three Ways To Feel Fabulous This Summer.....	17
GNOMES (Meppershall Good Neighbours)	18
Friends of St Mary’s Right Royal Village Quiz.....	19
Warden Abbey – Your Local Community Vineyard	20
The Queen's Favourite Flower	21
Jobs For May In The Garden	22
NEED SOMETHING DONE? LOOK IN THE MESSENGER FIRST!.....	22
Parish Church of St Mary The Virgin (Church of England).....	23
Church News and Events in May.....	25
Meppershall Second Sunday Strollers.....	25
Shefford Craft and Produce Show.....	26
Fill This Gap... ..	26
The Meppershall Players.....	27
The Jubilee Variety Show	28
Financial Matters by Paul Savuto	29
Henlow Amateur Theatrical Society.....	30
Mid Bedfordshire Cancer Support Group	31
Meppershall Wanderbus Timetable	32
Wanderbus 2022 Excursion Programme.....	33
Useful Contact Details In Meppershall.....	34
The Team And Collation Dates.....	36

Editorial by Mick Ridley and James Read

We're all about Meppershall people this month...

Our colourful cover celebrates Meppershall Craft Club (read more on page 10). The club is a great opportunity for people who like making things and learning new creative skills. Kim updated us about the club's latest endeavours to knit lap blankets for the residents of New Meppershall Care Home. Their creative work extended to the way the blankets were presented, with Lorraine and Diane wrapping each blanket individually to make a surprise gift for residents. What an amazing commitment of time and skill, and what a generous gesture of kindness. Great job everyone!



In this issue we also report on the village gathering to say goodbye to Shefford Leisure Club, wishing Enid Pamment all the very best in her retirement from the planning and organising of this long-standing organisation. A great time was had by all who attended her farewell afternoon at The Sugar Loaf back in early April (see page 12).

As the village hall really gets back up to full speed after the end of lockdown, we also report on the retirement of David Foskett from the Meppershall Village Hall Committee. A presentation was made to David earlier this year and you can find the photos later in this issue. Thank you David for your service to the village.

Younger villagers also make an appearance as we report on the visit of children from the village school to the Davidsons Homes development, to help create the garden of the showhome. Their job was to incorporate eco-friendly features. It would be great to think that this focus on wildlife, habitats and the environment in general will remain a feature of the planning and building taking place in our area.

At Meppershall Social Club, Sharon Tingey and Graham Walker get a mention for 'special' birthdays this month. Their work to make the most of the village hall and support a thriving social club and a great calendar of events, with the wider social club committee, is much appreciated. If you haven't visited yet, why not make this the month when you pop in at the club, in the village hall building?

As the Platinum Jubilee of HM Queen Elizabeth II approaches, The Meppershall Players offer you a very special evening on 14th May (see page 28)... and the Friends of St Mary's Meppershall offer you another on 21st May (page 19). We would love to share other news of Jubilee activities (formal and informal) across the village, so please drop us a line using the contact info on page 36 with photos and comments on your own events, parties and merriment.

Yes alongside celebrations in the UK, we recognise the recent move by Central Bedfordshire Council to "stand in solidarity with the people of Ukraine" – passing a special council motion in April. So many thoughts and prayers are being offered in the direction of that war-torn country, and we wish strength and success to all those assisting the Ukrainian nation and its people, locally and further afield, in many different ways. How fortunate we are to be able to enjoy our way of life at this time.

YOUR NEW LOCAL DENTIST

NEW
PATIENT
EXAMINATION
NOW ONLY
£49



@SilsoeDentalClinic



SILSOE DENTAL
CLINIC

A brand new state of the art private dental clinic is now open in Silsoe. Local, Principal Dentist, Dr.Salaman Iqbal & his team offer a full range of high quality private dental treatments including;

Emergency Appointments, Direct Hygienist access, Dental Implants, Cosmetic Dentistry, Root Canal Treatment, Tooth Extraction, Invisalign, Dentures & more.

Register for your private appointment & consultation today.

01525 868 600
www.SilsoeDental.co.uk
Hello@SilsoeDental.co.uk

First Floor, 4 The Gateway, Blackthorn Place, Silsoe, Bedfordshire, MK45 4PZ
(Next door to Co-op Food -Silsoe, Mander Farm Road)

Please mention the Meppershall Messenger when responding to advertisements

TJ PLUMBING SHEFFORD Ltd

☎ 07976 310574

✉ info@tjps.co.uk

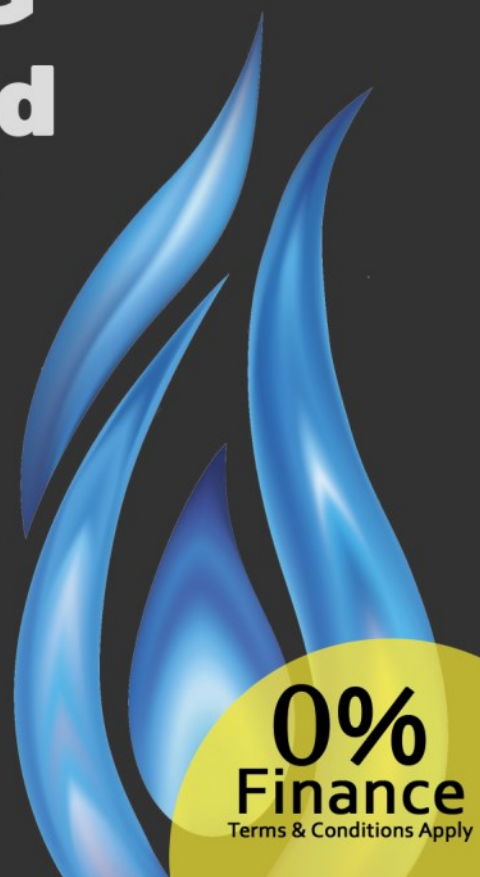
Boilers, Heating & Powerflushing...

Get in touch with Emma or Terry
on 01462 860043 for a free quote

We provide the full range of plumbing
and heating services to customers across
Bedfordshire & Hertfordshire



see our new website www.tjps.co.uk



Independent Financial Advice provided by



Who are we?

We are Chartered Financial Planners At DGS our decisions are based on what is best for our clients. We do not sell our business by offering our clients a first class financial advice service that is tailored to their individual needs. Whatever your goals we are able to implement a plan to help you achieve them. We view the relationship with our clients as long term, and pension funds, or a regular income to sustain you in retirement, the advisers at DGS and adapting our advice as our clients circumstances change.

✓ Savings & Investments

✓ Employee Benefits

✓ Retirement Planning

For a FREE financial health check contact
Paul Savuto - Meppershall based
Chartered Financial Planner

07834 499595

or e-mail ps@dgsifa.com

DGS Independent Financial Advisers Limited,
6 Parkway, Porters Wood, St Albans, Hertfordshire, AL3 6PA

✓ Inheritance Tax Planning

✓ Mortgages

✓ Protection

Please mention the Meppershall Messenger when responding to advertisements

Budgens

OPEN: Mon– Sat: 7AM—8PM
Sun: 8AM—8PM

Big range, big brands, *great* prices
Costa Coffee now serving.
Check out our monthly specials for
even *better* value!
See you soon....



Paul Donald
Gas Plumbing & Central Heating

Based in Henlow
Boiler Changes,
Boiler Repairs & Servicing
Power Flushing,
Unvented Cylinders,
Central Heating & Bathroom Installations,
Underfloor Heating

Free estimates
No job to big or small
35 years experience



07973 410957 | 07415 100610 | 01462 815386



Monday - Friday 9.00 - 5.30 •
Saturday 9.00 - 12.00

Telephone
01462 811852

14a Clifton Road, Shefford,
SG17 5AE

Independent Family Business established over 35years

Eye Examinations • Contact Lenses
Ocular Coherence Tomography with Retinal Photography

Free NHS Eye Examinations & Free Children Spectacles (conditions apply)

www.hingopticians.co.uk

Please mention the Meppershall Messenger when responding to advertisements

Letters to the Editors

Dear Editors,

My Swan Song – Shefford Leisure Group

I would like to thank everyone who joined the 'party' at The Sugar Loaf on Wednesday 6th April for 'afternoon tea' and to say their farewells. There was nothing formal, just friendly and it was lovely to see people enjoying themselves after such a long break.

A lot of thought had gone into the closure, but I had tried to find somebody to 'take over' but sadly nothing happened!

Phew... a lot of 'thank yous' are on the list, as without their help nothing would have taken place.

Firstly I really must thank my daughter Sharon who gave up so much of her time arranging the day and I know she had a problem trying to keep it secret from me!! (What a nosey woman!)

My beautiful cake – how big was that! ...beautifully decorated and very artistic! – Oh and it tasted just as nice as it looked! All from our very own bakery! Thank you Mary and your staff it was really lovely – I managed to enjoy my piece when I got home!!

Our sincere thanks must go to The Sugar Loaf for allowing us to use their venue - everything ran smoothly and their staff ensured everyone was comfortable and had a chair. Nobody was rushed and everyone was allowed to take their time. Many of our people didn't realise Meppershall even had a pub! I didn't like to tell them we had five at one time.

Thank you everyone for ensuring the day was memorable. It was so lovely to see everyone after such a long time during lock down. Over the last couple of years, I have relooked at where we live and cannot help but think how lucky we are to have such beautiful surroundings and friendly neighbours.

Thank you all so much, without you all, nothing would have happened.

Enid x

Dear Editors,

Meppershall Clean Up

Over 20 people turned out for the volunteer litter-pick on Saturday 26th March with more than 40 bags of rubbish collected around the village.

It was very disheartening to see such disrespect for the cleanliness of our village where there are litter bins in most areas but it appears it is much easier to just dump it anywhere.

What is more disappointing is that after the clean up on Saturday, Centenary Field was again littered after Sunday's fine weather with tins and sweet papers etc.

Come on Meppershall residents – take some pride in your village and its facilities and pick up your rubbish and put it in a bin or take it home!! Not too difficult!!

Name supplied

Meppershall Parish Council – Approved Minutes

Minutes of the Ordinary Meeting of Meppershall Parish Council (MPC) which took place on Monday 14th March 2022.

Chairman's announcements

- The most recent crime statistics show that there were 8 recorded offences for Meppershall in February.

Public Session - CBC Ward Councillors Liddiard and Brown provided an update on Central Bedfordshire Council (CBC) activities:

- Community Grants Scheme – This has been approved by CBC and will be advertised from next month. This is different to the Ward Councillor Grant scheme as it is aimed at big projects (£10-15k) that are deliverable in a year.
- CBC Design Guide Consultation – This consultation ends on 31st March but is important as it covers the parameters and framework for housing design. All residents are encouraged to respond.
- Community Action Day – This will be held in Shefford on 22nd April in the little square near Morrison's. All organisations will be involved and residents will have an opportunity to ask questions and receive assistance. Details will be forwarded to the Clerk for publication.

Questions / comments from the public:

- Earlier in the month the Clerk raised an issue with CBC regarding the allocation of s106 funds from a Meppershall development to another parish council. What action has been taken or is to be taken against the "human" who caused the error and their supervisor who did not pick up on the error before the unilateral undertaking was signed off? *ML is meeting with the CBC team later this week to discuss this matter with them and will report back at the next meeting.*
- Is there anything that can be done about the dog poo issue in the village, like a poster campaign perhaps? *ML will ask CBC what posters etc. are available / can be used and if a social media campaign is possible. Action: Clerk to add to a map, areas where more dog bins are needed and forward this together with 'dog poo' hotspots to ML.*

Procedures, Consultations and Legal

- a. **Co-Option** – The Clerk had previously circulated the application of Mr L Wright (present at the meeting) to all councillors and confirmed having spoken to him at length regarding the role. *Resolved to co-opt Mr Leo Wright to the role of councillor at Meppershall Parish Council.* Cllr Wright signed a Declaration of Acceptance of Office before the Clerk and Proper Officer and was then asked to join councillors in deliberating the business of the meeting by the Chairman.
- b. **Procedures** - *Resolved to adopt Hire of Open Spaces Policy v1.0. Carried. Resolved to adopt Honorary Freedom of the Parish Policy v1.0 with the removal of section 7 in the draft.*

c. Health & Safety and Risk Management

- The Clerk had previously circulated the MPC Risk Review Assessment report, Overall Risk Summary report and Allotments and Open Space Action Plans to the Community Safety & Risk Management working group and then all councillors. *Resolved that the 2021-2021 Risk Review and actions be approved and that they be signed by the Chairman.*

- *Resolved that the MPC Litter Pick Risk Assessment be approved.*

d. Annual Parish Meeting - Cllrs agreed to facilitate and hold the Annual Parish Meeting on 25th April, starting at 7:00pm in the Village Hall as per the approved meeting schedule and that the Clerk should publicise as normal.

- e. IT – Website and Email** - Cllr Standbridge reported that the gov.uk domain changeover has taken place. Four councillors are yet to set up the new gov.uk emails (Clerk and Cllr Standbridge to assist where necessary). Visits to the website continue to rise. Cllrs Standbridge and Morgan have also filmed the Centenary Field video message but it requires refining. This will be provided to the Clerk ASAP for distribution during March.

- f. Stocken House Green Space** - Davidsons are pending confirmation from previous landowners regarding our agreed version of the Management Agreement. Mr Alderman, MPC's Arborist, is due to attend site on 31st March for his first inspection. *Action: Clerk to chase Davidson's for an update.*

- g. Electrical Connection from Old Road Meadow** - Update from Clerk on negotiations regarding electricity connection from Old Road Meadow to The Mow site and to consider proposal made by Blakeney Estates. Our solicitors, Ross Williams, have no experience in negotiating land matters as required by MPC in these circumstances and suggested we contact a land agent for advice. Brooks Leney were highly recommended and after providing details about our situation and speaking to them the Clerk, after consulting with the Chairman, appointed Brooks Leney to act on our behalf. In summary the following proposal has been made by Blakeney Estates Ltd to Meppershall Parish Council as a final and best offer for a Wayleave to connect electricity to their 9-unit development on adjoining land:

- Blakeney to erect a post and rail with stock netting fence along the entire Eastern Boundary;
- Blakeney to pay the Parish Council a straight payment of £30,000 with no conditions as to how funds are used;
- Agreement from Blakeney to fully reinstate any disturbed ground including replacing trees and hedges, to the satisfaction of the Parish Council;
- Blakeney Estates Ltd to cover the Parish Council's professional and legal costs plus VAT (total estimated at £5,500 plus VAT);

Our solicitors Ross Williams will be required to draw up the contract with input from Brooks Leney. *Resolved that the Council accepts the proposal made by Blakeney Estates Ltd for a Wayleave to connect electricity to their 9-dwelling development on the Mow and that the Clerk, Brooks Leney and Ross Williams Solicitors deal with Heads of Terms and contract.*

Finance

- a. **Purchase Orders** - *Resolved to purchase Platinum Jubilee Lamp Post Signs at cost of £212 plus carriage and VAT.*
- b. **NJC Local Government pay rates applicable from 1st April 2022** - Councillors confirmed receipt of the NJC pay rates applicable from 1st April 2022 and noted that the Clerk's March salary needed to include appropriate back pay and that an additional pension contribution would be required. The Clerk confirmed that these items had been addressed in payments pending approval at this meeting.
- c. **Document approval** - *Council resolved that Bank Statements and Reconciliation reports 154 and 155 Current Account and 028 Savings Account be approved and signed.*
- d. **Orders for the payment of money** – *Council resolved that the schedule of payments as presented be approved and authorised for payment by Cllrs Thompson or Parsons.*

Planning and Housing

- a. **Planning applications for consideration**
 - CB/22/00475/VOC - Polehanger Farm, SG17 5LH - Variation of condition numbers 5 and 6 of planning permission CB/20/02153/FULL - extend the limit of hours for performing and/or playing or outside live or recorded music and for the music noise levels. *Resolved that the Council has no objection to planning application 22/00475.*
 - CB/22/00422/LB - Polehanger Farm, SG17 5LH - Listed Building: Repair structural timbers to roof of the barn. *Resolved that the Council supports planning application 22/00422.*
 - CB/22/00799/FULL - The Pigling, SG17 5LL - Erection of two detached dwellings with associated garages and carport. *Resolved that the Council objects to planning application 22/00799 and that the Clerk circulate the objection letter to councillors once completed.*

Neighbourhood Plan

The plan is under review by the Clerk and Mrs Chapman. CBC contacted the Clerk to advise that they had sought legal advice regarding the implications for Neighbourhood Planning as a result of the National First Homes Policy Guidance. They have now received the advice from a QC, whose view is that since Neighbourhood Plans do not benefit from the transitional arrangements, and CBC do not have a Strategic Housing Mix Policy, in order to meet the basic conditions in paragraph 8 of schedule 4B of the 1990 Act, in particular para 2(a) which is whether - having the regard to national policies and advice contained in guidance issued by the Secretary of State, it is appropriate to make the [plan], - all NP's would need to consider and have regard to the First Homes Policy and seek to make provision for it. Moreover, if a NP chooses not to do this, reasoning must be given as to why this has not been done, notwithstanding the clear government guidance on this matter. Therefore, the QC is of the view that all NP's should include the First Homes requirement within one of their policies or as a standalone policy. For the Meppershall Neighbourhood Plan, this could be

most appropriate as an additional bullet point within policy H1. The QC has also advised that it would be prudent to re-consult on this policy addition/ alteration. However, if the plan continues with the policy addition without re-consulting, it may be able to seek to rely on consultation responses received from the next stage (Reg. 16), but this will depend on the approach of the Inspector. CBC therefore recommend that the national First Homes requirement is included within the Meppershall Neighbourhood Plan and that MPC consults on this.
Resolved that the Clerk organise to re-consult on policy H1 of the Meppershall Neighbourhood Plan ASAP.

Highways and Transport

a. OPCC (Office of Police and Crime Commissioner) and RMF grant funding update from Clerk

The Clerk reported that both RMF (Rural Matched Funding) applications had been submitted to CBC and that VAS (Vehicle Activated Sign) installation costs were pending.

Environment and Leisure

a. The Clerk provided updated prices for grass cutting from A&B Gardening for 2022-2023. *Resolved that the Council appoint A&B Gardening Ltd as grass cutting contractors for 2022-2023.*

b. Centenary Field - The Clerk and Cllr Morgan reported that:

- A meeting was held with Sherriffs on 7/03 involving MVH (Meppershall Village Hall) so that we can plan a date for the start of works, material storage areas, Heras fencing positions etc. Sherriffs will be sending over a planned schedule of works with approximate dates.
- MPC will communicate works pending to residents in March 2022. Cllrs Standbridge and Morgan have prepared a video and this will be supported with an article in the Messenger.
- The Clerk met with Fresh Air Fitness on 27th January to agree on the new outdoor gym equipment order, installation etc.
- Padlocks – 21/02 Children's play area large gate closed with padlock as users keep leaving it open. Pitch gate number padlocks were being opened by residents to exercise their dogs without permission therefore number padlocks removed and replaced with key locks.

c. Litter Pick – Confirmation of plan for litter pick - The Clerk has already received confirmation from residents wishing to participate in the litter pick and has purchased equipment required and organised collection of waste with CBC. Additional posts on Facebook are scheduled. Mrs Thorne is identifying areas for groups to work in. Mrs Thorne and the Clerk will organise refreshments for volunteers.

John Thompson – Chair – Meppershall Parish Council



Wayside KENNELS & CATTERY

GIVE YOUR PETS A HOLIDAY TOO

www.waysidekennelsandcattery.co.uk
CHAPEL ROAD, MEPPERSHALL, BEDS, SG17 5NQ

01462 813261

ESTABLISHED OVER 40 YEARS

FULLY LICENCED AND INSURED

MODERN LUXURY HEATED KENNELS AND CAT CABINS WITH INDIVIDUAL COVERED RUNS

DOGS GET REGULAR INDIVIDUAL USE OF OUR EXERCISE FIELDS



FULLY VACCINATED DOGS AND CATS
ONLY, INCLUDING THE KENNEL
COUGH VACCINE FOR DOGS

FULL GROOMING SERVICE AVAILABLE
FOR BOARDERS

VIEWINGS WELCOME BY
APPOINTMENT PLEASE

DAY BOARDING AVAILABLE



Sheridan's
*estate agents and
surveyors*

Estate Agents
Surveyors
Property
Management
Block
Management

Residential Property Services

Sales and Lettings / Homebuyers Surveys / Valuations / Lease Extensions

Commercial Property Services

Commercial Agency / Development Advice / Landlord & Tenant / Commercial Valuation



Canine Studio Dog Grooming

CONTACT

07795067357

- Bath and Pamper
- Full Grooms
- Puppy Grooms
- Nail Clipping
- Teeth Cleaning
- Fully Insured

Unit 9 Rectory Farm Business Centre Upper
Stondon SG16 6LJ

Please mention the Meppershall Messenger when responding to advertisements

HENLOW VETS

22 Bedford Road
Lower Stondon, Beds.
SG16 6EA



Contact: 01462 416416
henlowvets@henlowvets.co.uk

BUSINESS HOURS

Mon - Fri : 8.30 a.m. - 6.30 p.m.
Saturday : 9:00 a.m. – 12:00 noon (Sunday closed)

**NEW - EMERGENCY SERVICE NOW AVAILABLE
(REGISTERED CLIENTS ONLY) CALL 07464 350428**



16 Hitchin Road, Meppershall, Shefford, SG17 5JF

Opening Hours

Mon-Sun: 2pm-9pm
Open 7 Days

01462 814495

www.theairmankitchen.co.uk



THE AIRMAN KITCHEN
Authentic Turkish Cuisine

Please mention the Meppershall Messenger when responding to advertisements



Walnut Tree

CAFE

Located in
Meppershall
Village Hall

Serving locally roasted coffee,
all day breakfast, lunch, and
homemade cakes.

With *warmer weather* just
around the corner, be sure to
come along and make use of
our *outdoor patio* and *kids
play areas*!

Opening times:

Tuesday - Friday: 9am - 3pm*
*kitchen closes at 2pm

Phone: 07376632207

walnuttreecafe2020@gmail.com



Find us on Facebook
@walnuttreecafe



MEPPERSHALL MESSENGER
Annual Advertising Charges 2022-23
For ALL 10 issues

Size	Black & White	Full Colour
Full Page	£215pa	£320*pa
Half page	£140pa	£215pa
Quarter page	£85pa	£140pa

**The Messenger now reaches 900 homes, and so could
your business.**

Every letterbox in the village, 10 times a year.

**For further information, contact Andrew Pain
Advertising Manager, on 01462 817192 / 07875 580069
Email: andrewgpain@hotmail.com**

**NOTE* an additional rate applies for "Premium Positions"
Add 15% for back cover, add 10% for inside front and back cover.**

Please mention the Meppershall Messenger when responding to advertisements

Meppershall Children Plant A Woodlands Rest Showhome Garden

Green-fingered Meppershall Church of England Academy pupils used their talents to help plant the garden of two new showhomes at the Davidsons Homes development.

A group of local year-4s children from the village school helped incorporate eco-friendly features into the joint garden of the new showhomes at Davidsons Homes Woodlands Rest development off Shefford Road.



Year 4 pupils with Victoria Barnaby of Davidsons Homes

Davidsons is building 145 properties at the site. They encouraged the class to come up with environmentally-friendly elements and invited them to visit the development to help finish work on the garden.



Simon Tyler, Sales Director at Davidsons Homes South Midlands, said: "We would like to thank the pupils for their efforts. We were pleased they were able to visit the showhome to help put the final touches to the garden and hope they enjoyed using their new gardening kit."

"After previously working with the school to help stock up the library, we were keen to continue this relationship and get the pupils involved in the launch of our new four-bedroom showhomes at Woodlands Rest."

“We thought it would be a nice idea to ask the students to help come up with some eco-friendly design suggestions for the garden, and the Year 4s certainly delivered with some fantastic ideas.

“The children’s posters were filled with brilliant suggestions like bug hotels, bird baths, bird houses, hedgehog hideaways and vegetable and flower patches. After taking on board their input, we incorporated a mix of these elements into the garden.”

Margaret Newman is Head of School at Meppershall Church of England Academy and she explained how much the children enjoyed their task. “The children really enjoyed planting in the gardens,” she said. “They are environmentally conscious and love anything related to mammals and insects. Having said that, I think one of the things they enjoyed the most was exploring the lovely new showhomes!”

A new sales office and two showhomes have recently been unveiled at Woodlands Rest. For more information, visit davidsonshomes.co.uk.



Davidsons Homes invited the Year 4s to the showhomes in Meppershall to help incorporate eco-friendly features into the gardens.

Pupils from Meppershall Church of England Academy holding the new bird boxes which have now been put up.

Meppershall Craft Club – 3 Years On!



Lorraine, Diane & Kim would very much like to thank everyone who has made The Meppershall Craft Club such a success! We cannot believe it's over 3 years since we started this club – Yes, we had breaks due to Covid, but we are still going strong with around 25 members attending each week. It's been a while since we posted in the Messenger - so we thought it was time for an update.

We meet on Wednesday mornings (10am to 12 noon) in the Meppershall Village Hall to share a coffee & our crafts. This is made possible with the kind support from The Meppershall Village Hall and The Walnut Tree Cafe - who bring our refreshments in on a trolley!

Our crafts include Water colour painting, Crochet, Jewellery making, Knitting, Needlepoint and various Paper Crafts. There have been so many crafts we cannot list them all!

People work on their own crafts, or, as we often do, share crafts with others. We run regular workshops where our members can join if they wish. The most recent ones have included 'black stitch' and card making.

In addition to our crafting each week we share information on many interesting local events and activities. We also arrange some group outings – our next being an Afternoon Tea to celebrate The Queen's Platinum Jubilee.

Thanks to the kind generosity of our members we are able to make many donations to charities: So far this year we have donated to The Cinnamon Trust, Alzheimer's Association and Anglia Air Ambulance. It's worth noting that even during lockdown our members continued crafting and made many handmade goods from masks & scrubs to baby hats & blankets for local organisations.

Our current project is knitting blankets for The New Meppershall Care Home – photos to follow next month (pictured below, with label).

If you would like to join us just pop along to the village hall on a weds morning - we are a very friendly bunch! We love our Wednesday mornings and very much look forward to many more to come.

Finally, a huge Thank You to every one of our members – you are all so kind and generous. You make The Meppershall Craft Club what it is xxx.

Kim Tyler, Lorraine Jarvis & Diane Hughes - The Organisers.



Contacts: Kim 0795 255 7203, Lorraine 07811 865 259, or Diane 07473 828488.

David Foskett Retires From Meppershall Village Hall Committee

Earlier this year on 22nd February the Meppershall Village Hall (MVH) Committee said a very fond farewell to David Foskett on his retirement from the committee after many years of commitment and contribution to this key village institution.

David also served for many years on Meppershall Parish Council (MPC). As the MPC representative on the MVH Committee he played a key role in the initial discussions with the Foster family, way back in 2011, to assess the feasibility of a new development linked to the MVH site which had the potential to provide an updated village hall and new village facilities.

Those initial discussions included Bloor Homes, the proposed developer at the time. Many people are very grateful that Croudace was ultimately the developer of the site. Despite teething problems, snagging, issues with the open spaces and the inevitable disruption that such development brings, the agreement between MVH, MPC, Polehanger and Croudace has indeed delivered a wonderful new hall during these last years of David's work with MVH.



David Foskett and the Meppershall Village Hall Committee

"It has been a highlight to see the building open, surviving the pandemic and achieving a full booking calendar," said David. "The development of the new hall was a Team effort. David Birch brought financial and negotiating expertise, Graham Jones brought legal expertise, I had a business and technical background. We had an excellent surveyor and construction expert in David Sawford from Robinson Hall and we cannot forget Graham Walker who looked after the maintenance aspects of the old hall, and the interim hall and now the new hall too."

While the work was happening, David was able to keep the village updated. "Simon Adamson of Croudace Homes was a very helpful and accommodating Site Manager during the construction period," he explained. "He allowed me regular inspections

and photography visits so I was able to do monthly updates for the Messenger and the website.”



Graham Jones leading the presentation to David Foskett on behalf of Meppershall Village Hall Committee (and demonstrating their similar impeccable fashion sense)

The MVH committee presented David with a farewell gift of a hamper filled with rather fine beverages and refreshments. The Meppershall Messenger adds its great thanks and appreciation to David whose contribution to village life will stand large in the life of this community for many decades to come.

Enid Pamment's Shefford Leisure Club Farewell Gathering

The Meppershall Messenger's Colette House and John Thompson were among a host of well-wishers at Enid's informal gathering at The Sugar Loaf to celebrate the many successful and enjoyable years of Shefford Leisure Club on 6th April.

Roger's Bakery provided an amazing celebratory cake – Enid and Sharon wish to say a special thank you for that wonderful contribution to a great afternoon.

Holly and her staff at The Sugar Loaf made the event a big success – huge thanks to them also for hosting.

Reverend Roni was also among many friends saying a big thank you to Enid and recognising her commitment to trips far and wide, which brought so much enjoyment to so many people over so many years. Thank you to her for sparing valuable time to be there.

Two representatives of Keech Hospice Care for children represented the incredible fundraising achieved by the group. The total amount of money raised through so many raffles and tombolas has amounted to more than £20,000!

Shefford Leisure Group's often-times driver, Gary Whitfield, took the chance to chat with many of those he had driven all around the region and well beyond. Gary was renowned among the group for his knowledge of London's roads and was always a big hit with the group's passengers! The comfort and safety of his driving was an important part of many outings.



We will miss Enid's monthly articles here. With the village, the whole Messenger team says a big Thank You to you, Enid, and wishes you much happiness (and time for relaxation!) without the hard work of running the group. Perhaps you will even have time to enjoy your own quiet trip to a much-loved spot in the times to come.



A WARM WELCOME AWAITS...

Visit Chandlers Country Stores
for all your pet supplies, country
clothing, equestrian and small
holding products.



Chandlers

**Country
Stores**

Chicksands, Shefford, Bedfordshire, SG17 5QB.

01462 810190

BestSalon

OLAPLEX.

WE OFFER OLAPLEX TO DRAMATICALLY
REDUCE BREAKAGE DURING COLOR SERVICE.



Lac HYBRID
GEL POLISH

01462 817151

Established for 29 years.

Let us make the Best of you

**We offer free consultations & free
skin/strand tests. Call in to pick up a
price list and discount voucher at**

**197 Station Road, Lower Stondon
(Next to the Post Office/Pharmacy)**

5 Star Google reviews

**Unisex
Hairdressing
Gel Nails
Beauty Therapy
Wedding &
Prom Packages
Ombre'/Balayage
Hair Ups
Accessories & Gifts**



**Plastering, Cornice,
Painting & Rendering
All aspects of
Lime Works,
Period Properties
a Speciality**



**Carl Coxall
Plastering & More**

158 Station Road, Lower Stondon

Tel Home : 01462 817531

Mobile: 07803 383222

VAT Free, No Job Too Small

Please mention the Meppershall Messenger when responding to advertisements



DAVIDSONS
HOMES



MEPPERSHALL

WOODLANDS
Rest

Showhomes now open!

Davidsons are thrilled to be building an exclusive development of 2, 3, 4 and 5 bedroom homes at Woodlands Rest in Meppershall. **Hurry, plots are selling fast, make your enquiry today!**

Opening Times:

Thursday - Sunday 10:00 - 5:00 & Monday 12:00 - 5:00

Shefford Road, Meppershall, Shefford, Bedfordshire, SG17 5LL



For more information please visit
davidsonshomes.co.uk



@davidsons_homes

01462 886 538

Please mention the Meppershall Messenger when responding to advertisements



TREATMENT STUDIO

- Laser Hair Removal • LVL • Microblading • Tattoo Removal
- Eyebrow Wax & Tint • Vitamin B12 boosters • Red Thread Vein Removal
- Microdermabrasion Facials • Treatment for Onychomycosis (toe fungal)

Call, email or text to book -
We have availability 7 days a week, including evenings

Browzers Studio, 42 Coneygate, Meppershall SG17 5GB

07960 780860

info@browzers.org

www.browzers.org



@browzersstudio



Charles Wilson Carpets Ltd.
The Quality Carpet & Flooring Specialist

- Excellent range of carpets, hard flooring & rugs
- Award-winning service
- Expert fitting team
- Family business (est. 1972 - 2020 in Hitchin, now Shefford!)
- FREE Parking

Find us at Unit 6E, St Francis Way, Shefford, SG17 5DZ
(Near Morrisons, next to the car wash)

Tel: 01462 450 780

Web: charleswilsoncarpets.co.uk

Please mention the Meppershall Messenger when responding to advertisements



Every Tuesday
in the Sugar Loaf car park (for now)
3.30-7.00pm

Pop down and 'Try our Fry'!
To avoid waiting in the cold,
call to place your order:

07833 786108

A Big Thank You to all our customers
who have loyally supported us



The Cafe at W&H Peacock is

OPEN

View the salerooms for our upcoming
auctions and then relax with a coffee
and a slice of cake.

Our unique cafe in Bedford Auction Centre with free
wi-fi comfortably seats over 100 customers.

We serve cooked breakfasts, paninis and
sandwiches, light lunches and snacks plus
a range of hot and cold drinks.

Eastcotts Park,

Wallis Way,

Bedford, MK42 0PE

01234 266 366

Visit

www.peacockscfe.co.uk

for more details on our opening
hours and to view our full menu.

Computer Repairs


We Speed Up Slow Computers

- No Fix No Fee
- We come to you
- PC & Laptop Repairs
- Laptop screen replacement
- Full Tune Up Service
- Data Recovery
- Virus or Spyware Removal
- Upgrades and systems built to order
- Network Setup & Repairs
- Software Errors Fixed
- Not Booting or Blue Screens
- PC Crashing or Freezing
- Internet & Wifi Setup Service
- Software Installation
- For Home and Business
- At Affordable Prices
- Over 20 years Experience

Call us, we are here to help

henlowcomputers@btopenworld.com

01462-850033



M.J. Ryall
Building Supplies Ltd.
Suppliers of Timbers and all Building Materials

• Paving & Walling	• Fencing
• Bricks	• Calor Gas
• Aggregates	• Plumbing
• Timber	• Tools
• Turf	• Top Soil

Tel. 01462 730169

100 Norton Road, Stotfold SG5 4PG

www.mjryall.co.uk info@mjryall.co.uk

Meppershall Social Club

MSC hopes this finds you all safe and well.

Spring has sprung and with the warmer weather and lighter evenings, We hope to see many of you coming to enjoy a drink or two on our lovely patio. We are blessed to have such a wonderful modern facility both inside and out, along with a very well stocked bar. We look forward to welcoming you soon.

Our regular 'Karaoke & Vinyl' nights are proving ever popular. Keep an eye on our Facebook page and Meppershall Notice Board on Facebook for further details.

Bingo: 7pm, Friday evenings

Darts: 7pm, Tuesday evenings

Snooker & Pool: available most evenings

All our entertainment is advertised on Facebook and around the building

A small tribute and a big shout out to MSC's Chairman, Mr Graham Walker, as he celebrates his 70th birthday this month. Graham has dedicated himself over many years to running and keeping up a well-oiled ship in the social club. His dedication and commitment to MSC is commendable and the MSC team would like to wish him a very happy 70th birthday...

"HAPPY BIRTHDAY GRAHAM"

MSC thank you for your valued and continued support and wish you all a safe and happy May.

MSC

Sun, Skin & Suspicious Symptoms

Get savvy with your skin, May is Skin Cancer Prevention Month..

Suspicious symptoms uncovered; did you know that:

- 86% Melanoma skin cancer cases are preventable
- 16,744 New cases of melanoma skin cancer each year (UK average for 2016-2018)
- In females, the most common specific location for melanoma skin cancers is the lower limb; for males it is the trunk (UK average for 2016-2018)
- Melanoma skin cancer is the 5th most common cancer in the UK, accounting for 4% of all new cancer cases (2016-2018)
- More than 1 in 4 skin cancer cases are diagnosed in people under 50, which is unusually early compared with most other types of cancer. Over recent years, skin cancer has become much more common in the UK

- Skin cancer is the cancer you can often SEE, yet it often goes undetected in the early stages. Check yourself in the mirror and keep these three simple words in mind: NEW, CHANGING or UNUSUAL. It could save your life!

Get skin cancer sussed and click on the link below for more information.

<https://www.cancerresearchuk.org/about-cancer/skin-cancer>

If you have any concerns about skin cancer, please call and make an appointment with a clinician at your surgery without delay.

Jaqui Derrick, Care Coordinator - Ivel Valley South Primary Care Network

End of Life Support – The Anne Robson Helpline

Introducing the Anne Robson Helpline - if you or someone close to you is dying, you can talk to us.



At the Anne Robson Trust we aim to be there to listen to anyone who faces dying or the imminent death of someone they care about. We know that facing the end of life can leave you feeling isolated and alone.

Being able to access support is so important. Gaining knowledge of what may happen towards the end of life and being prepared helps both the person dying and their loved ones to feel a sense of control.

Calls are free and confidential. **Call us on 0808 801 0688 - we have time to talk**

Please visit www.annerobsontrust.org.uk/helpline-service to find out more.

The Anne Robson Trust is a charity that passionately believes that "no one deserves to die alone." Its founder, Liz Pryor MBE, was recognised in the Queen's 2022 New Year's Honour's list, for services to end-of-life care. The Trust works alongside NHS hospitals to train volunteers, who sit with patients in the last days and hours of their life and support the patient's family and friends. During COVID restrictions, volunteers could not visit hospitals, so the Anne Robson Trust Helpline was set up - a free national telephone service to offer comfort and support where needed.

Join Meppershall CERT WhatsApp Group Can you help?



What is a CERT?

A CERT (Community Emergency Response Team) is made up of organisations and volunteers willing to respond to a village emergency and to provide support. They are vital in increasing our resilience during emergency incidents such as fires, flooding, disease outbreak, major transport disruption or a loss of utilities.

How does a CERT help the community?

During an emergency, a village CERT may be called in to action by Central Bedfordshire Council to work alongside other emergency responders. As volunteers members are all local, they bring a level of expertise and local knowledge that the emergency services often rely on. We spend the vast majority of our time preparing for large scale emergencies that fortunately rarely occur, however it is often the small-scale emergencies that can have a negative impact on a community and cause disruption.

Who knows what's going to happen?

What would we do if our village water supply suddenly ceased together with the gas supply because a burst water main has ruptured a medium pressure gas main? Water should be restored within 2 days, but the gas supply could take up to 5 days. It's freezing and the forecast is -2 degrees at night over the next week. Snow is also predicted. Villagers need to be careful not to overload the electricity network as this could blow the sub-stations causing widespread power outages. Who will help our vulnerable residents and help the emergency services co-ordinate help for all? The residents of Lockerbie never imagined a 747 falling from the sky and landing in their village! **Who would have thought that we would see trees uprooted on the roads of Meppershall?**

What makes a good CERT volunteer?

Essential Qualities

- Effective communicator and able to follow instructions
- Logical problem solver and team working
- Aware and respectful to the Emergency Services
- Respectful, friendly and honest
- Willing to work in the elements

Desirable Qualities

- Able to work under pressure
- Knowledge of local area
- First Aid Trained
- Full UK Driving licence

Want to join us?

Want to join our WhatsApp group who react and assist in the event of an issue in the village? If interested in joining us please email the Parish Clerk at lovemeppershall@meppershall.org with your contact details and how you think you can help the Meppershall CERT. The Clerk will then contact you with more information.

Trugs and Trowels Gardening Club Campton

We are not in the Village Hall on the first Monday of May and June. Instead we have a couple of trips planned.

In May we are lucky enough to have a guided tour of the Woburn Estate gardens with Martin Towsey, Estate Manager. Places are already fully booked. His talk to us in March was extremely interesting so our members are very much looking forward to this.

Open Gardens will be on 18th June at 2pm starting in Greenway. £5 per head to include a pot luck buffet. Please call Maryika to book your place! We are always looking for new gardens to feature as well as seeing how previously visited ones have progressed during the year. If you would like your garden to be included please contact Maryika. This is great opportunity to showcase your new flower bed, garden design or continued floral beauty. For others it is a great way to get inspiration from around the parish from like minded gardeners.

Maryika, 01462 851729

Three Ways To Feel Fabulous This Summer

Summer is officially on its way. How are you feeling?

It's important to nourish our bodies, boosting energy and enjoyment. This includes movement, whole foods, activities and people. Here are three great ways to feel fabulous this summer:

1. Get your shoes on!

Just 10 minutes of walking is enough to significantly help your body and mind. Best of all, it's easy to incorporate it into your daily routine.

Being outside and moving allows you to de-stress and breathe fully which in turn nourishes all your joints, muscles and vital organs.

2. Indulge in feel good foods

Choose to eat whole foods as they are satisfying and delicious to eat. Your body really does thank you for them. (And you don't have to totally miss out of slices of cake every now and then!)

Listen to your body. If your diet feels restrictive and dull, then look for inspiration. Your body is amazing. It knows exactly what you require and when.

3. Increase your water intake

Upping your water intake cleanses the body of toxins and build up.

Are you worried about exercising?

There are so many benefits of exercise, helping both our physical and mental health. If you feel any aches or pains as you increase your activity, the team at Shefford Osteopathic Clinic is here to help. We'll help you to keep moving, enjoying life with treatments and lifestyle advice tailored to you. Let's make the most of this summer!



**Good
Neighbours
Offering
Meppershall
Excellent
Services**

Meppershall GNOMES

Annual General Meeting

Saturday 28th May at 10.30am

**Walnut Social Area -
Meppershall Village Hall**

Everyone welcome.



WE NEED YOU!

Have some spare time? Believe it or not even an occasional hour makes a big difference.

Like to help people in the community? Then please consider volunteering.

You do not need to commit to any job, any time –

you tell us your availability and the type of jobs you wish to do.

When we have a client request we ask our volunteers if anyone is able to help.

If you cannot help on that occasion that's fine!

Give us a call on 07760 793921 or email gnomes.secretary@meppershall.org and join our friendly team of insured and DBS checked volunteers helping those who need a helping hand at times.

Marc Dellar
GARDEN SERVICES

Upper Stondon

- Grass Cutting
- Hedge Cutting
- Strimming
- Overgrown Gardens Cleared



Please Call Anytime

01462 850562 or 07792 227913

RDG

PLUMBING AND HEATING SERVICES

Locally based in Henlow
Well established company
GAS SAFE registered

Tel: 07850 441762

email: robgooda@aol.com



Lawton Property
Services Ltd

Carpentry & Building

Tel: 01234 381065

Mobile: 07939 004561

Musical Bumps

real music... real education... real fun!

Outstanding music classes
from birth to school

Classes in Meppershall
on Mondays

BOOK A
TRIAL
CLASS TODAY

Percussion
& puppets

Rhythm
& rhyme

Listening
& learning


Ready...
steady...
sing!



facebook.com/musicalbumps.centralbedfordshire

Contact Alex Martin Tel: 07397 776357
musicalbumps.com alex.martin@musicalbumps.com

Philip Allen Tree Surgeon

- 
- Comprehensive trees service
 - Fully insured & all work carried out to BS3998
 - Crown reductions and lifting
 - Felling
 - Hedge shaping and maintenance
 - 24 hour call out
 - Free estimates
 - All materials completely recycled
 - Seasoned hardwood logs available

**Contact Phil Allen on
Hitchin 834411 or 07909 716 631
or email on
allentrees@btinternet.com**

Seasoned Hardwood Logs

**Bulk & barrow bags
available.**

Meppershall based.

**Free delivery within
20 miles of Hitchin**

**Delivery can be made to
Woodstore/shed.**

Call Patrick Sinclair

Mobile: 07870396007

ROGERS BAKERY

High St. Meppershall
Shefford, Beds.
SG17 5LZ

01462 813398
RogersBakery@aol.com

39 years Quality and Service

1983 -2022

Fresh Bread Daily

Celebration Cakes our Speciality

Filled Rolls & Sandwiches



Chiropodist

Mobile Surgery

Graeme Harley

m.s.s.ch m.b.ch.a

H.P.C. Registered

**15 New Street,
Shefford**

**Tel. 01462 816 458
Mob. 0773 9101 396**

**E.T.
Accountancy
Services**



**Experienced Accountant and Tax
Adviser based in Clophill, Bedfordshire
providing a full range of accountancy
and taxation services to businesses and
private individuals.**

**To arrange a free initial consultation
please telephone me on:**

01525 590465

or

email emma@et-accountancy.co.uk

*Chartered Accountant and
Chartered Tax Adviser*

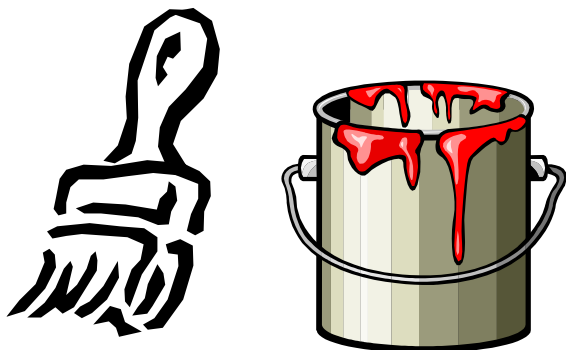
Emma Thoulass FCA CTA

emma@et-accountancy.co.uk 01525 590465

MARTIN ROE

PAINTING & DECORATING

*Quality assured
All aspects*



Telephone: 07973 532430

Derek Harris & Sons Landscaping

**Est 1976, Free Estimates,
Friendly & Reliable Service**

**Grass Cutting, Turfing, Patios Laid,
Block Paving, Brick Piers,
Garden Walls, Fencing,
Tree & Hedge Cutting,
Gardens Cleared
Registered Waste Carriers**

Tel: 01234 381854

07885 442800, 07398 268956

www.dhandsons.co.uk



Shefford Building Supplies Ltd

All your building & D.I.Y requirements under one roof.
Key cutting, paint mixing, timber & sheet materials cut to size,
ironmongery,
domestic, electrical
and much, much more.
Free local delivery

TEL: 01462 813381 FAX :01462 811754
44 High street, Shefford,
Bedfordshire SG17 5SD

www.sheffordbuildingsupplies.co.uk



Engraving, Trophies & Occasions

Trophies, medals, plaques,
house signs, glass engraving,
safety signs
and giftware.

All engraving work
undertaken
Fast turn around
Competitive prices

www.engravingsuk.com
engravingoccasions@live.co.uk



Malc's

Garden Services

Grass and hedge cutting
Fence and Shed Repair
Small General Maintenance
Telephone: 07921572065
malcsgm@hotmail.co.uk

Jon Lambley WINDOW CLEANER

For quotation call
07796 303908
01462 811945



15 years experience,
Reliable, Professional & Fully Insured
Meppershall based

G M ROOFING SERVICES

ALL ASPECTS OF GENERAL ROOFING AND REPAIRS

- REPAIRS AND RE-ROOFING
- SLATING
- TILING
- LEAD WORK
- CHIMNEY POINTING

**NO JOB TOO BIG OR TOO SMALL
PROFESSIONAL & RELIABLE
SERVICE**

Mobile: 07733 478870

BASED IN MEPPERSHALL



Saturday
21st May 2022

Meppershall Village Hall

7pm bar

for 7.30 start

The Friends of
St Mary's Meppershall
Charity Presents...

A RIGHT ROYAL VILLAGE QUIZ

OUR ANNUAL QUIZ RETURNS IN COMMEMORATION
OF THE PLATINUM JUBILEE WITH SOME SPECIAL
ROYALLY-THEMED QUIZ ROUNDS



Teams of 6 per table.

(Individuals / small
groups welcome!)

£6 per person or
£35 per table.

Book via

James & Miriam

Tel. 857836.

Raffle and Bar

Bring your
own snacks.



WARDEN ABBEY

The community vineyard



Did you know Bedfordshire's medieval vineyard is now an exciting community project?

This beautiful field near Old Warden was first planted by monks at Warden Abbey. Centuries later, the "Lyttel Vineyard" was re-planted and now produces award-winning wines.

Today, it's an army of volunteers who tend the vines all year round as well as run tours and events, school visits, social & therapeutic horticulture, wildlife and heritage projects.

OPEN FOR TOURS MAY TO SEPTEMBER

See website for tour dates, events, vouchers, gifts and stockists

07981 113714 info@wardenvineyard.org.uk



wardenvineyard.org.uk



Local . Ethical . Award-winning

The Queen's Favourite Flower

By Donna Cameron, Donna's Garden Designs, 07833 670934

What a lovely time of year in the garden, everything is growing so fast and it seems like there is so much to be done. There is such optimism as the weather warms up and we are spoilt for choice with the array of plants and seeds in the garden centres.

As we approach the Queen's Jubilee I wondered what her Majesty's favourite flower was and apparently it is Lily of the Valley. I think this is very apt as it has a timeless elegance and is very British; it never fails to put on a lovely display and as I'm sure you know has a gorgeous scent fit for a Queen.

Royal brides such as Queen Victoria and Kate used it in their bouquets and it is thought to bring luck in love. They were featured in the Queen's coronation bouquet and symbolise trustworthiness. Truly fitting for the world's longest serving monarch. They are grown at Buckingham Palace.

Lily of the Valley, (*Convallaria majalis* - meaning belonging to May) is a woodland perennial plant, ideal for ground cover. It thrives in moist, shaded spots and gradually spreads into clumps. It has dainty highly fragrant bell like flowers.



Despite its name it is not related to the lily but actually related to the Asparagus family. Although is poisonous if ingested.

In World War 1 it was used to combat gas poisoning.

If you are buying them as crowns, soak in water for half an hour before potting up.

I recently bought some pink lily of the valley so will be interested to see them unfurl!

Enjoy the Celebrations - hopefully having some Garden Parties!



Jobs For May In The Garden



Watch out for late frosts and protect tender plants

Tie in shoots of climbers

Wait till end of the month to plant out summer bedding

Sow annuals in gaps in borders

Plant hanging baskets

Earth up potatoes

Apply liquid feed to spring bulbs

Water regularly

Prune spring flowering shrubs after flowers fade Eg Forsythia and Chaenomeles

Lift and divide overcrowded clumps of spring flowers

Pinch out tips of bedding and young annuals to encourage bushier growth

Check hedges for nests before trimming

Plant out dahlia tubers and canas when risk of frost has passed

Hoe weeds

NEED SOMETHING DONE? LOOK IN THE MESSENGER FIRST!

WHATEVER YOU NEED A SPECIALIST OR TRADESPERSON FOR, THERE'S PROBABLY ONE ADVERTISING IN HERE, LOCAL TO YOU.



OUR ADVERTISERS INCLUDE:

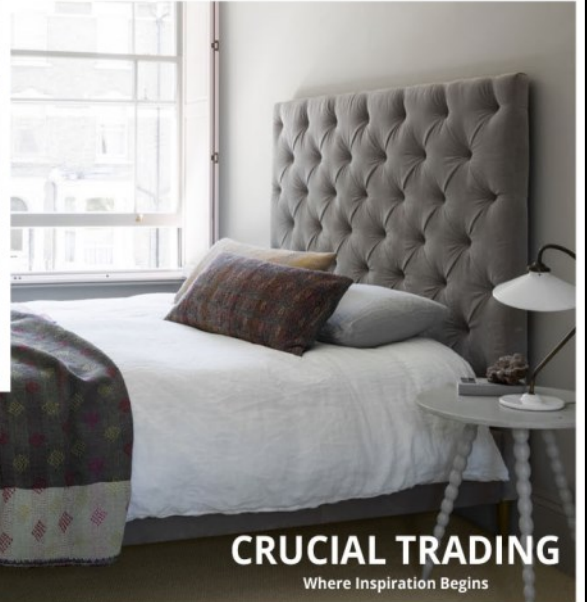
PLUMBERS AND HEATING SERVICES, ELECTRICIANS, PLASTERERS, DECORATORS, BRICKLAYERS, CAR/GARAGE SERVICES, GARDEN SERVICES, HANDYMEN, CHIMNEY SWEEP, WINDOW CLEANER, CARPET CLEANER, WINDOW/DOUBLE GLAZING SPECIALIST, FLOORING, VETS, DOG GROOMER, KENNELS/CATTERY, OPTICIAN, PHYSIO/MASSAGE, BEAUTY SALON, BUILDING/HOUSEHOLD SUPPLIES, ACCOUNTANT, FINANCIAL SPECIALIST (...even counselling/hypnotherapy services if it's all too much!)

Look in the Messenger first. It may be the only place you need to look!

FAB FLOORING

CARPETS & FLOORING

CARPET
WOOD FLOORING
LAMINATE & VINYL
RUGS



CRUCIAL TRADING
Where Inspiration Begins

Showroom open
Mon - Fri 9-5pm
Saturday 9-4pm

01462 815755 | sales@fabflooring.co.uk | 01462 817612

www.fabflooring.co.uk • Unit 12D Old Bridge Way • Shefford Industrial Park, Beds SG17 5HQ

How are you going to live your life?

Staying active and healthy is vital. We're here to help.

- Support your immune system
- Reduce aches and pains
- Recover from injuries



01462 811006 www.SheffordOsteo.com
14a Clifton Road, Shefford, SG17 5AE

Please mention the Meppershall Messenger when responding to advertisements




THE CONIFERS
 CANINE HOTEL

**LUXURY
ACCOMMODATION**

HOLISTIC FOOD SHOP

www.the-conifers.co.uk 01525 860339 The Causeway, Clophill 

James Cullip
 Painting & Decorating

- interior/exterior - all aspects
- wallpaper hanging
- coving
- general household maintenance
- plastering services available
- free estimates
- fully insured

References available

t: 01462 817 122 m: 07899 888 545
 e: go_on_james@hotmail.com
www.cullippaintinganddecorating.co.uk

**E.T.
Accountancy
Services** 

Experienced Accountant and Tax
 Adviser based in Clophill,
 Bedfordshire providing a full range of
 accountancy and taxation services to
 businesses and private individuals.

To arrange a free initial consultation
 please telephone me on:
01525 590465
 or
 email emma@et-accountancy.co.uk

*Chartered Accountant and
 Chartered Tax Adviser*

Emma Thoulass FCA CTA
emma@et-accountancy.co.uk 01525 590465



🏠 97 Hitchin Road
Shefford
Beds. SG17 5JB

☎ **01462 813338**
✉ denmanautocare@outlook.com
🌐 www.denmanautocare.co.uk

Your local garage for all your vehicle needs. Fast, friendly reliable
And efficient service that does not cost the earth



MOT's £40



Full Service from £195 + vat



Diagnostics £36 + vat

All parts and labour fully guaranteed

FREE COURTESY CAR OR COLLECTION

For all your vehicles needs



RMI



Donna's Garden Designs

RHS Qualified

Fully Insured

Garden Designs

Planting Plans

Horticultural Advice

Hard Landscaping

Donna Cameron 07833670934

donnacameron710@gmail.com

W&H PEACOCK
AUCTIONEERS & VALUERS



Weekly Auctions

Visit the Bedford Auction Centre to enjoy
the excitement of a live auction.

Antique & Modern Furniture • Clocks • Books
Ceramics & Glassware • Pictures & Prints
Bicycles • Jewellery & Watches • Collectables
Garage Tools & Equipment • Household Electrical Items
Office Furniture & Equipment • Retail Products & Stock
Vehicles • Horticultural & Commercial Equipment
Building Materials • Garden Furniture & Effects

Eastcotts Park, Wallis Way, Bedford MK42 0PE
01234 266 366 peacockauction.co.uk

Please mention the Meppershall Messenger when responding to advertisements



A G Plumbing Services (Shefford)

Taps, Tanks, Toilets, Showers,
New Bathroom Installations &
Repairs, Cylinders, Sinks, Drains

- Local Friendly, Fully
Reliable Professional Service
- No Call Out Charge
- Free Estimates
- All Work Fully
- Explained & Guaranteed

Contact Andrew Good: 01462 817220

Or Mobile: 07815 735433

Professional Carpet,
Rug and Upholstery
Cleaning
Trusted Locally
for over 20 years



THE CARPET CLEANER

Spot and Stain
Emergency
Call Out ✓

Powerful
Truckmounted
Cleaning ✓

Tile and Grout
Cleaning ✓

Cleans Deeper and
Dries Quicker ✓

We provide
all Power and
Hot Water ✓

Fully Insured ✓

Established 1984 ✓

For a Free On-Site Estimate

01438 211763 or **07973 855007**

Old Town, Stevenage, Hertfordshire
email thecarpet.cleaner@ntlworld.com

www.thecarpetcleaneruk.com



ACE PEST CONTROL

Fast, efficient, friendly service with very competitive rates

Available - 7 days a week

Local company. Established 30 years

We specialise in all pest problems especially WASPS

5★★★★★ Google rating

Phone: 01767 627417

Web: acepestcontrolbeds.co.uk

Parish Church of St Mary The Virgin (Church of England)

Church Road, off Campton Road, Meppershall

www.stmarysmeppershall.org.uk † facebook.com/stmarysmeppershall



Rector: The Reverend Veronica Goodman

01462 339962 – ronigoodman@gmail.com – usual day off Monday

Churchwardens:

Chris Valentine 01462 815971 Peter Clark

PCC Secretary:

Anne Parsons 01462 813333 Email: annie10639@gmail.com

Message from St Mary's...

May is always a bit of a strange month for me, bitter sweet you might say.

May is the month of my Mum's Birthday and also of my Aunty Pat's birthday. I am sure I don't have to tell you how much my Mum meant to me and how much I miss her still. My Aunty Pat was also very close, lived just up the road, and she and my Uncle Tony (my Dad's brother and sister) were so much part of our everyday lives - shared meals, days out, bedtime stories etc.

Mum and Aunty both loved the country side and its wild flowers and they both loved May as the earth really blossomed again after the chill of winter.

Already as I walk past the profusion of wild flowers blooming between the Lime Trees in the churchyard I can't help but think of them both.

Easter too, makes me think of all that new life.. and the new life makes me think of one of our Easter hymns (author Eleanor Farjeon 1931):

Morning has broken
Like the first morning
Blackbird has spoken
Like the first bird...

Praise for the sweetness
Of the wet garden...

Praise with elation,
Praise every morning,
God's re-creation
Of the new day!

And although there is sadness still, joy filled memories make me smile and breathe in the warm scented spring air even more deeply as if I am finding new life.

In these times though, it is really hard for many people to find that sense of joy as so many things in our time stir real fear in their hearts and minds too. Covid, war, rising prices of fuel and food... cause lurking fears, disturbed sleep and restless nights. Of course we must seek to help and support one another.... but let us not forget God!

Recently I preached about two of the Bible's most reassuring texts, texts that many Christians choose to "hang on to" - in good times and in less good times". .. Psalm 23 "the Lord's my Shepherd" and Matt 11: 28-30 "Come to me, all you who are weary and burdened, and I will give you rest."

I suspect we all want our lives to be protected by a great shepherd - well fed and watered, never bruised or stumbling. Perhaps too often though, when life is running smoothly - it is easy to forget that God is there with us in the good times and to be thankful!

But we know our lives are not all green fields and still waters... The troubles and challenges of our life appear in the psalm too, but they are not something we ever have to face alone.

In all the challenges and difficulties of our lives - Jesus says, "Come to me..."

And we have many simple and beautiful poetic images of what that might look like I recall two here.

Do you remember Minnie Louise Haskins' famous lines on "the gate of the year" that have been used at royal occasions including George VI's 1939 Christmas broadcast...

"Go out into the darkness and put your hand into the Hand of God. That shall be to you better than light and safer than a known way.

"So I went forth, and finding the Hand of God, trod gladly into the night. And He led me towards the hills and the breaking of day..."

Jesus said "Come to me"

And then of course, the poem Footprints in the sand:

*"Lord, you said once I decided to follow you,
You'd walk with me all the way.
But I noticed that during the saddest and most
troublesome times of my life,
there was only one set of footprints.
I don't understand why, when I needed You the most, You would leave me."*

*He whispered, "My precious child, I love you and will never leave you -
never, ever, during your trials and testings.
When you saw only one set of footprints,
It was then that I carried you."*

Jesus said “Come to me” Jesus says

“Come to me, all you who are weary and burdened... and I will give you rest for your souls.”

As the Lord of life steps forth from His tomb let's turn to him once again - in our joys, our fears, our darkness, and despair - to find in Him the hope and peace that world cannot give. May the hope and the peace and the joy of Easter be yours, today and always.

Wishing you every blessing, Rector Roni

Church News and Events in May

Sundays	11.00am	Morning Worship every Sunday Holy Communion on the 2 nd and 4 th Sundays (8 th and 22 nd May)
Every Wednesday	10.00am	Holy Communion in church
Tuesday to Saturday	10.00-3.00	Private prayer and quiet time – the church open for you to sit and visit during the day
Online services:	9.00am	Morning Prayer using 24-7's Lectio 365 App 7-days-a-week
	9.00pm	Night Prayer/Compline from the C. of E. Daily Prayer App, 7-days-a-week

Find us on Facebook: <https://www.facebook.com/stmarysmeppershall/>

Find us on our website: <https://www.stmarysmeppershall.org.uk/>

Find us on YouTube:

<https://www.youtube.com/channel/UCRjDLGAY8GI6afkO8iALYOA>

Why not come and enjoy your local, historic Parish Church on your own, or with friends, or with your family? A warm welcome awaits you in the beautiful setting of the oldest building in the village. Do you need prayers? We have a small group of intercessors who pray confidentially for those who ask for it. Please talk to Roni (Tel. 339962 / 07533 376880) or Chris Valentine (telephone 07701 039324).

Meppershall Second Sunday Strollers

The Strollers' walk this month is on May 8th and it is a local classic – across to Wrest Park via Lower Gravenhurst and Whitehall Wood. We'll stop there at the coffee shop and some can get a lift back at that point if they prefer that. Others will walk back via Upper Gravenhurst, Wassledine and the Cow Bridge. Just under 4 miles out, similar distance back. More info from Miriam or James on 857836 or find the Strollers at <https://www.facebook.com/MeppershallStrollers>. Meet at the church gate at 2pm.

Shefford Craft and Produce Show

Saturday 10th September 2022

The 40th annual Craft and Produce Show will be held on Saturday 10th September in Shefford Methodist Hall. The Schedules are now ready and the committee hope that everyone will find a class that will inspire them.

The Show has a celebratory theme as it is the 40th Show so there are several that feature red – a jar of red jam, a photograph of something red, a truss of red tomatoes and a 'Ruby Anniversary' flower arrangement. There are classes for children, youth groups, gardeners, crafters and cooks. The Show Special is 5 poppies in any medium except paper and these will later be displayed around the town for the Remembrance Service.

The schedules will be available in May in the Library, The Paper Shop, the Post Office and also at the STMA Gala on 5th June and at the Town Council Fun Day on 16th July. Look out for banner, where you can also pick up one of our Fun Quizzes.

Please give us your support.

The Show opens at 2pm when delicious refreshments will also be served.

The Committee of Shefford Craft and Produce Show

Birthdays

We send best wishes this month to...

Graham Walker who will be 70

Sharon Tingey who will be 60

Ken M who will be 94

Gordon D who will be 93

Doreen P who will be 94

Mary M who will be 87



Wishing you all a wonderful day and a happy and inspiring year ahead!

Fill This Gap...

...or an even larger space (!), with your own article, information, news, letter, comment... whatever you want to share with the village! Email us at mepp.messenger@gmail.com. This is YOUR village magazine.

NEIL BRADSHAW

LOCAL BUILDER

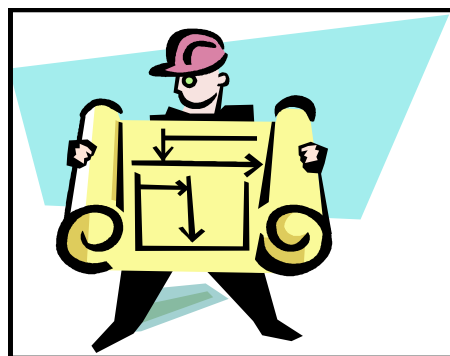
SPECIALIST BRICKLAYER

ALL KINDS OF BUILDING WORK UNDERTAKEN

**EXTENSIONS, ALTERATIONS, GARDEN WALLS,
GROUNDWORK, PATIOS, FIREPLACES**

Shawford House
118a, Shefford Road
Meppershall
Beds. SG17 5LL

t - 01462 815016 or 07774 878244
E - nbradshawbuilders@hotmail.co.uk



LUCAS, HUNTLEY & CO

Established 1978

Quality PVC-U windows, doors & conservatories
Window and door repair specialists
PVC-U fascias, soffits, guttering etc.
We are a Fensa registered, local, family run business.

Contact: Paul Lucas on: 01462 811581
Mobile: 07778 312504

51A High Street, Meppershall, Beds SG17 5LX

pclucashuntley@gmail.com



FTF Worldwide Event Management and Fully Fused Fireworks



**Over 35 years experience
of organising memorable occasions
FTF will deliver you an event to remember
big or small**



01462 817640



FTFWorldwideEvents



@FTFWorldEvents



Please mention the Meppershall Messenger when responding to advertisements



The Meppershall Players



Have you got your tickets for our spring production? If the answer is 'No!' don't panic, keep calm, it's not too late - you still have time to get them while we're having our last few rehearsals for 'The Jubilee Variety Show' at the Shefford Town Memorial Association (STMA) Digswell Hall, 10 Hitchin Rd, Shefford SG17 5JA. On Saturday 14th May 2022, the matinee performance is at 3pm. All tickets for the matinee are £5, and for the evening performance at 7.30pm tickets are £10, Concessions £5 (3yrs-17yrs or 60yrs and over). Tickets are still on sale and can be purchased online at ticketsource.co.uk/themeppershallplayers or call 01462 816336 to reserve.

As befits this once in a lifetime Jubilee celebration we're decking the STMA hall in red white and blue and setting it out like a street party (as in bygone days) with two long tables. Like picnic in the park events (no we're not asking you to bring your own chairs) we're encouraging you to bring your own picnic or afternoon tea to the matinee, and your own supper to the evening performance. As always, we'll still be serving teas and coffees at very reasonable prices and the STMA bar will be open if you prefer to buy a glass of wine or beer.

We don't want to give too much away about the show but as the word variety suggests it is jam-packed with a bit of everything, and we make no apologies (none at all) for the many opportunities for audience participation and patriotic flag waving (flags & booklets supplied!)

In this, The Players' 50th anniversary, we will be attending some fun events. One such event is the STMA Annual Summer Fete on Sunday 5th June (on the STMA Digswell recreation grounds). We're planning to have the ever-popular Tombola stall and a performance piece for the arena.

We've set the date for our next Ultimate Decades Disco - Saturday 8th October, 7.30pm-11.30pm, at STMA Digswell Hall. We'll be giving it a party feel, encouraging you to bring your own supper and shake your booty to all the amazing sounds of the 60's 70's & 80's. All tickets will be £5. Again, it will be another fun for-all-the-family event (the same price for the young and young at heart)

The Players AGM will be held on Monday 6th June, 7.45pm at the STMA Digswell Hall. This is open to members and non-members and it is a great way to meet the Players if you're interested in finding out more about us.

Find the Meppershall Players on Facebook (Meppershall Players Community) Instagram, Twitter. The Players meet every Monday evening at 7.30pm at the STMA, 10, Hitchin Road, Shefford SG17 5JA. Membership is currently free and we welcome people of all ages who have an interest in amateur theatricalities, Whether it be on stage or off indulging in all areas of theatrical performances, set building, costumes, directing, acting, make-up, song & dance, etc.

Interested? We look forward to meeting you!

Karen Mitchell (Players' Secretary) 01462 816336

**The Meppershall Players
Presents**

The Jubilee Variety Show

Performing at S.T.M.A. Digsweil,
10 Hitchin Road, Shefford, SG17 5JA on
SATURDAY 14TH MAY 2022

Matinee Performance: 3pm—All tickets—£5

Evening Performance: 7.30pm—Tickets—£10 – Concessions [Under 17yrs/Over 60 yrs] – £5

Tickets are on sale NOW* at: www.ticketsource.co.uk/themeppershallplayers

For non-internet ticket sales and enquiries please contact: 01462 816336

This event is table seated—like a street party

(*Online ticket sales will cease 24hrs before the performances start)



Financial Matters by Paul Savuto

Taking positive steps to achieve financial freedom

When are you thinking of retiring?

With many pre-retirees reassessing their lives and priorities in the wake of the pandemic, there really is a seismic shift for many people towards achieving life balance. People need a plan to flex with their changing aspirations - it's become more about living life rather than going through the motions of the daily grind. With earlier retirement a serious consideration for many seeking balance, a quarter of Brits who aspire to retire early feel that age 60 is the optimum time to do so.

Embracing a new lifestyle

What really makes you happy? If you're planning to celebrate your 60th birthday by saying 'goodbye' to working life, it's good to know that 68% of people report an increase in overall happiness as a result of retiring early, with 44% of early retirees reporting their family relationships improved and 34% citing improvements in their friendships. From a health perspective, 57% of early retiree respondents report a boost to their mental wellbeing, with 50% believing their physical wellbeing has improved.

Driving force

Nearly a third (32%) of people who retired early or plan to do so are driven by the desire 'to enjoy more freedom while still being physically fit and well enough to enjoy it.' Other factors driving people to pursue early retirement include financial security (26%), reassessing priorities and what's important to them in life (23%), wishing to spend more time with family (20%), finding they are either 'tired or bored' of working (19%). Stress is also a contributing factor that 19% of respondents are keen to eradicate.

Pause for thought

With a sizable 24% of people returning to work after retiring because they experience financial issues, careful planning is essential. Interestingly, 47% of retirees found that their finances worsened and only 22% felt they benefited financially from their decision to retire early.

Positive steps to financial freedom

People cite steps toward making early retirement achievable like paying off a mortgage (30%), saving little and often (29%), saving extra when they receive a pay rise or bonus (19%) and receiving an inheritance (14%).

We're here to reassure you that happiness doesn't need to come at a cost when retiring early. Although it's very important to be realistic, with meticulous planning and careful consideration, we can assess and develop a robust plan to align and flex with your changing requirements and priorities.

Inheritance Tax reporting– in the know

Keeping up to date with tax changes can be challenging and you may have missed this one in relation to the reporting of Inheritance Tax (IHT), especially as it's not something most of us will deal with very often.

Excepted estates

The changes came in at the start of the year and apply to the estate of anyone who dies on or after 1 January 2022. Now, before you make a report to HM Revenue and Customs (HMRC) you need to check whether the estate is an 'excepted estate' to make sure you complete the right forms. There are several reasons why an estate may now be classified as 'excepted':

- The estate has a value below the current IHT threshold (£325,000 for one person)
- Any unused threshold is being transferred from a spouse or civil partner who died first, and the estate is worth £650,000 or less
- The estate is worth less than £3m and the deceased left everything in their estate to their surviving spouse or civil partner who lives in the UK, or to a qualifying registered UK charity Inheritance Tax reporting – in the know
- The estate has UK assets worth less than £150,000 and the deceased had permanently been living outside of the UK when they died.

A step-by-step guide

Further details on how to value an estate for IHT and report its value can be found here www.gov.uk/valuing-estate-of-someone/who-died/check-type-of-estate

Thinking of your own IHT planning More people are having to pay IHT; HMRC figures show IHT receipts for the period April 2021 to January 2022 to be £5bn, which is a £700m increase on the same period one year earlier. IHT planning is a complicated subject, but sensible financial planning can help to reduce the amount of IHT payable and safeguard your wealth for the future.

GET IN TOUCH

DGS IFA Ltd are Independent and Chartered Financial Advisers. We also hold the Gold Standard for Pension Transfers. I am a Chartered Financial Planner with over 29 years financial services experience, so you are in safe hands. For a free review of your financial situation and to discuss your plans and goals, please contact me, Paul Savuto, AFPS, Chartered Financial Planner. DGS Independent Financial Advisers Ltd. 07834 499 595 or email ps@dgsifa.com, I'll be happy to talk to you and answer any questions you have. FCA 225814.

Is there a **THESPIAN** in the house?



If you're 18-98 then HATS Drama Group welcomes you. Acting, Front of House, Lighting, Backstage, Costumes, Make-up, Set Design and Set Building.

Contact: Peter Winfield 07971 962411

Our next production is a Murder Mystery at Meppershall Village Hall 9/10/11 June 7.30pm

JIM THE SWEEP

FOR ALL YOUR
CHIMNEY SWEEPING NEEDS

ALL TYPES OF FIREPLACE AND
CHIMNEY SWEPT

OPEN FIRES, LOG BURNERS,
STOVES AND INGLENOOKS

EVENING AND WEEKEND
APPOINTMENTS AVAILABLE

INSURANCE CERTIFICATE
PROVIDED

WEDDINGS ATTENDED



JIM TURNER

INSTITUTE OF CHIMNEY SWEEPS
REGISTERED SWEEP

MILL LANE, CAMPTON, BEDFORDSHIRE

TELEPHONE: 07891 306566

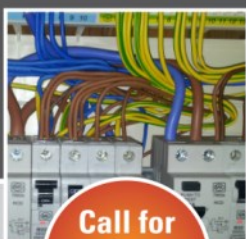
Advertise here

**from as little as
£55
for the whole year!**

**See our full rates
on Page 8**

Or contact us on
07875 580069
andrewgpain@hotmail.com

B.E.S
ELECTRICAL ENGINEERS



Call for
a free
quotation

Part P approved
Electrician

Domestic and Light Commercial

- All types of electrical work undertaken from replacing light fittings to rewires/extensions
- Local family run company with over 25 years experience

No job is too small!

Tony Bass

Tel: 01462 235205

Mobile: 07778 318027

Email: bes.luton@sky.com

Based in Meppershall



**HITCHIN
MOTORCARE LTD**

JAPANESE VEHICLE SPECIALISTS

Sales of Nissan cars

Repairs and services on all makes and models

1-3 WALLACE WAY, HITCHIN **01462 441122**

OPENING HOURS: Monday-Friday 8am-6pm,
Saturday 8am-1pm

www.hmccars.co.uk



MoT
Testing
Station



Please mention the Meppershall Messenger when responding to advertisements

JOHN R FORD - FRANCHISE STANDARDS AT INDEPENDENT PRICES.

DID YOU KNOW...

...the cost of a service at John R Ford is actually in-line with the prices you pay at a local independent garage? So it stands to reason that choosing a franchised dealer will mean that you'll get a great deal more when it comes to service and quality.

- ✓ Servicing: All Makes & Models
- ✓ MOT
- ✓ Tyres: budget to premium, most sizes in stock
- ✓ Free Collection & Delivery
- ✓ Courtesy Cars Available*
- ✓ Guaranteed Parts & Labour
- ✓ Manufacturers' Warranty Protected
- ✓ Manufacturer-Trained Technicians
- ✓ Appointments available 6 days a week: drop-ins welcome!
- ✓ Book online or by phone

So, why wouldn't you?

John R Ford & Sons Ltd

11 Ampthill Road, Shefford SG17 5BE 01462 628 628 www.johnrford.co.uk

* Subject to availability.



Mid Beds Cancer Group

Log in 'Online' from anywhere!

Informal cancer group for patients, families, friends, carers who wish to meet others for support, sharing & information. Your active participation will also help others on their journey.

Our next online meeting will be on Saturday 7 May 2022, 11am.

Revd Roni Goodman will share her very inspiring cancer journey which will prove to be of great benefit to us all.

Join Zoom Meeting

<https://us02web.zoom.us/j/3348518015>

Meeting ID: 334 851 8015

Password: cancertalk

We'd love to hear from you! Daksha & Phil Trivedi,

Email: daksha.trivedi@btconnect.com

Tel: 01462 813943; M: 07961 377526

MEPPERSHALL - WANDERBUS

Bookings & Info : Tel :0300-123-3023 www.wanderbus.org.uk



NEW TIMETABLE & NEW ROUTES - VALID FROM 3RD OCTOBER 2021


Service open to everyone. Cash fares /concessionary travel passes accepted

As from 3rd October 2021		"Stops at all Bus Stops on Request"	
W2 BEDFORD	- 1st & 3rd Wednesday of Month	OUT	RETURN
Shefford Rd, all stops		08.59	RR
High St. / Rectory Rd - all stops		09.00	RR
Interchange Retail Park		09.40	12.20
St Pauls Square / Corn Exchange		09.55	12.00
W3 BIGGLESWADE	- Every Monday	OUT	RETURN
Rectory Rd / High Street, All Stops		09.27	RR
Shefford Road, All Stops		09.29	RR
Biggleswade – A1 Retail Park		10.00	12.05
Town Centre - pick up o/s Asda Superstore		10.05	12.00
W5 BALDOCK (Town Centre / Tesco)	- Every Friday	OUT	RETURN
Rectory Rd / High St. – all stops		10.00	RR
Shefford Rd. – all stops		10.03	RR
Baldock – Tesco		10.25	12.15
W6A CAMBRIDGE	- 4TH Wednesday of Month	OUT	RETURN
Shefford Rd – all stops		08.48	RR
High St - all stops / Rectory Rd		08.50	RR
Cambridge, Downing St. – o/s John Lewis		10.10	14.15
W8A ST ALBANS	- 2nd Wednesday of Month		
Shefford Rd. – all stops		08.48	RR
High St. / Rectory Rd – all stops		08.50	RR
St Peters St. o/s Santander Bank / pick up opp Bank		10.25	14.00
W10 ST NEOTS	- 2nd Thursday of Month	OUT	RETURN
Rectory Rd. / High Street, All stops		09.18	RR
Shefford Rd, All stops		09.20	RR
St Neots - Market Place		10.15	12.20
W11 MILTON KEYNES	- 3rd Thursday of Month	OUT	RETURN
Rectory Rd. / High St., All stops		09.08	RR
Shefford Rd, all stops		09.10	RR
MK - Midsummer Blvd / M&S (Stop J3)		10.10	
/ John Lewis (Stop E3)			13.15
W12 HITCHIN	- Every Tuesday	OUT	RETURN
Shefford Rd, All stops		09.18	RR
High Street, Rectory Rd All stops		09.19	RR
Bancroft Stop D		10.05	
Bancroft Stop G (Outside Paperchase)			12.10
W14 WELWYN GARDEN CITY	- 1st Thursday of Month	OUT	RETURN
Rectory Rd. / High Street, All stops		09.14	RR
Shefford Road, All stops		09.16	RR
WGC Central Bus Station		10.00	12.15

EXCURSIONS – 4TH Thursday of Month – call For Details – 0300-123-2023

E: Thewanderbus@gmail.com

Buses available for PRIVATE HIRE – Call for Quote.

 WANDERBUS 2022 Excursion Programme			
DATE	DESTINATION	Entrance Fee as per current website	Bus Fare
Saturday* 28th May	NORTH WEALD MARKET, Epping. Huge outdoor market with over 200 traders selling everything from fashion to house & garden and street food. All facilities on hard standing.	Free Entry	£16.50 p.p. Pick up 10.00/10.30 Depart 14.00
Thursday 23rd June	GOTHNA GARDENS, Ashwell. Private tour of the gardens with tea. Country house garden with wildlife walk and formal garden surprises. These include a topiary garden, rose garden (over 150 species) a woodland garden and tea lawn with cottage garden in the style of Gertrude Jekyll.	£12.50 including tea.	£7.50 p.p. Pick up 13.00/13.30 Depart 17.00
Thursday 28th July	CASTLE ASHBY GARDEN, Northants. Ancestral home of the Marquess of Northampton. Extensive gardens including the romantic Italian garden, the unique Orangery, Arboretum & Menagerie. Excellent café.	£10.00 entry.	£12.00 p.p. Pick up 10.00/10.30 Depart 15.00
Sunday* 14th August	PITSTONE GREEN MUSEUM/HERTIAGE PARK, nr Tring. A fascinating blend of attractions from the past capturing the spirit of a bygone age. Regular attractions include: Pottery Demonstrations, Tractor rides to Windmill, Lace Makers, Craft Stalls Model Railways, Avro Lancaster Cockpit, Crossley Gas Engine. Hot snacks and drinks, filled rolls, sandwiches & cakes.	£9.00 p.p.	£12.00 p.p. Pick up 11.30/12.00 Depart 16.15
Thursday 29th Sept	ASCOTT HOUSE & GARDENS, nr Leighton Buzzard. An old English black & white timber manor house dating back in parts to C17 th . Acquired by the Rothschild family in 1873. Housing an exceptional collection of paintings, fine furniture and superb porcelain. Extensive gardens.	£13.00 p.p. House & Gardens or £8.00 Gardens only. Free to National Trust	£12.00 p.p. Pick up 11.30/12.00 Depart 15.30
Thursday 28th October	BICESTER VILLAGE SHOPPING CENTRE, Oxon. Home to more than 160 luxury fashion & lifestyle boutiques of many of the leading brands offering savings of up to 60% off the recommended retail price. Dine at Soho House & Co's farmhouse restaurant and café, or the splendour of Café Wolseley.	Free Entry	£20.00 p.p. Pick Up 10.00/10.30 Depart 15.15.
Thursday 24th Nov	CHRISTMAS MARKET - TBA		
<p>*Please note that the May trip takes place on a Saturday, August on a Sunday</p> <p>To Book: Call 0300-123-3023 or email: thewanderbus@gmail.com. We require a deposit of £5.00 p.p. for any excursion. Post a cheque to Wanderbus, 5 The Pastures, Upper Stondon, Beds SG16 6QB or bank transfer to: CAF Bank Ltd, Sort Code :40-52-40 Acc: 00013118, Wanderbus Ltd. (Use your name as reference).</p>			

Useful Contact Details In Meppershall

DEFIBRILLATORS – outside School and Post Office/Village Stores

DOCTORS, DENTISTS, PHARMACIES

NHS Direct	111
Dr Baxter & Partners	
Shefford Health Centre, Robert Lucas Drive, Shefford SG17 5FS	
Appointments	01462 810034
General queries, prescriptions etc.	01462 818620

Drs. Garragher, Neal and Akhtar	
109 Station Rd Lower Stondon SG16 6JJ	01462 850305

Shefford Dental Practice, 34 High St Shefford	01462 814020
Shams Moopen Dental, 99 Hitchin Rd Shefford	01462 648465
Lloyds Chemists, 7 High St Shefford	01462 813283
Shefford Pharmacy	
Shefford Health Centre, Robert Lucas Drive	01462 818633

Police: Emergency 999, non-emergency 101

Hospitals

Bedford Hospital	01234 355122
Lister Hospital, Stevenage	01438 314333

Utilities

Gas Emergency	0800 111999
Anglian Water	03457 145145
Electrical (power cuts, overhead cable down etc)	0800 3163105
	(Or 105 from a landline)

Central Beds Council	0300 300 8301
-----------------------------	----------------------

CBC councillors:

Tony Brown	anthony.brown@centralbedfordshire.gov.uk
Mark Liddiard	mark.liddiard@centralbedfordshire.gov.uk

Parish Council Clerk

Alessandre Marabese	clerk@meppershall-pc.gov.uk
---------------------	--

Member of Parliament:

Nadine Dorries	Nadine.Dorries.MP@parliament.uk
----------------	--

St Marys Church

Rev. Veronica Goodman, The Rectory, Church Road 01462 339962

See full details in the church pages of The Meppershall Messenger

Library

High St Shefford 0300 300 8067

Tuesday – Friday 9am – 6pm, Saturday 9am – 4pm, closed Mon & Sun

Whitbread Wanderbus service

Stephanie Kirby

thewanderbus@gmail.com

Food and Supplies

Budgens Stores, Post Office, High Street 01462 811252

Rogers Bakery, High Street 01462 813398

The Sugar Loaf, 25 High St 01462 654334

Mobile Fish & Chips (Happy Plaice), Tuesdays 3.30 -7.00, Sugar Loaf

Schools

Meppershall Academy, High Street 01462 813293

Meppershall Pre School Village Hall Tamsin Osborn 07816 357159

meppershallps@gmail.com

Robert Bloomfield, Shefford 01462 628800

Samuel Whitbread, Stotfold 01462 629900

Henlow Academy 01462 813733

Redborne Upper 01525 404462

Organisations

Meppershall Players, Karen Mitchell 01462 816366

Meppershall Good Neighbours (GNOMES) 07760 793921

Meppershall Brownies, Suzanne Brightwell 07817 392325

Shefford Guides, Angie Griffiths 07957 462519

Shefford Scout Group (Beavers, Cubs, Scouts, Explorers)

Kathy Georgiou 01462 629313

Meppershall Village Hall

Trustees trustees@meppershallvillagehall.co.uk

Bookings bookings@meppershallvillagehall.co.uk 07485 102727

The Team And Collation Dates

CONTRIBUTIONS

The Editor welcomes contributions to the Messenger, whether as letters, articles or notices. Contributions should preferably be as attachments to e-mail (address below) but handwritten contributions may be sent by post, or left in the folder kept at the Village Stores. Contributions should run to not more than one A5 page (except by prior arrangement) and should be received by the Editor not later than the 12th of the month for publication at the end of that month. Contributions received after the deadline may be held over.

DISCLAIMER

The Editor reserves the right to omit or alter any advertisement or article and to change the content, format or issue date of the magazine without prior notice. The Editor cannot be held responsible for the factual correctness of, or for any libellous comment or statement made in any advertisement, article or other contribution published in this magazine. Every effort will be made to avoid any deliberate attempt to mislead or otherwise cause harm or damage to any person or persons by any advertisement, article or any other contribution published in this magazine.

THE TEAM

Joint Editors James Read & Mick Ridley Email: mepp.messenger@gmail.com

Assistant Editor **Vacancy**

Advertising & Andrew Pain Email: andrewgpain@hotmail.com
Distribution 07875 580069

Treasurer John Thompson Email:
meppershallmessenger@meppershall.org

Collating Dates 2022			
June 2022 Issue	May 30 th	October 2022 Issue	September 26 th
July 2022 Issue	June 27 th	November Issue	October 31 st
Aug-Sept Double Issue	August 1 st	December-January Double Issue	November 28 th
Please contact John Thompson to confirm arrangements (contact information above).			

Please note that dates in the above table show when collating will take place, at 2.30pm in the Village Hall, for the corresponding month, displayed to the left. The issue being collated usually relates to the following month. However, please continue to look out for updates and alterations to usual plans during the coronavirus social distancing measures.